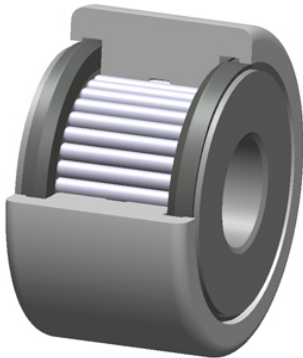




## Korean motorcyclist Co., Ltd



### PCI Procal Inc. YCF-6.00-S Bearings Crowned & Flat Yoke Rollers

Bearing No. YCF-6.00-S

roller diameter:	6.0000 in
operating temperature range:	-30 ° F to 250 ° F
roller width:	3.2500 in
radial dynamic load capacity:	61690 lb
d	2.2500 in
radial static load capacity:	160900 lb
roller shape:	Flat
roller material:	Chrome Steel
bearing element:	Needle Rollers
technical specifications:	<a href="#">Click here</a>
closure type:	Sealed

YCF-6.00-S Bearing 2D drawings and 3D CAD models