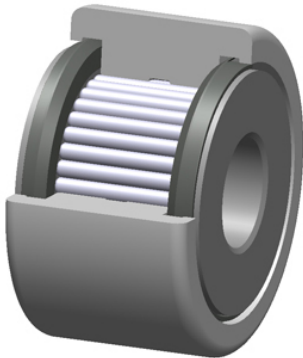




Korean motorcyclist Co., Ltd



PCI Procal Inc. YCF-2.50-S Bearings Crowned & Flat Yoke Rollers

Bearing No. YCF-2.50-S

roller diameter:	2.5000 in
operating temperature range:	-30 ° F to 250 ° F
roller width:	1.5000 in
radial dynamic load capacity:	11720 lb
d	0.7500 in
radial static load capacity:	32900 lb
roller shape:	Flat
roller material:	Chrome Steel
bearing element:	Needle Rollers
technical specifications:	Click here
closure type:	Sealed

YCF-2.50-S Bearing 2D drawings and 3D CAD models